



Hot Cathode Gauges IMR 265, ($2 \cdot 10^{-6}$ - 1000 hPa)



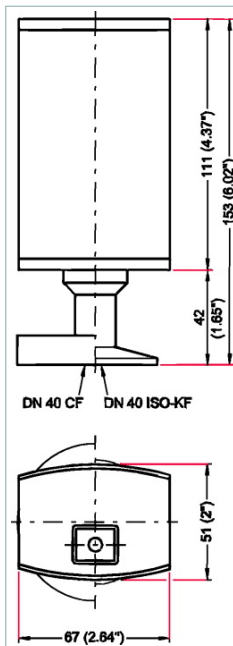
IMR 265, High Pressure Hot Cathode, DN 40 CF-F



Similar Image

- Flange size: DN 40 CF-F
- Measurement range from $2 \cdot 10^{-6}$ to 1000 hPa
- Two gauge heads (Pirani and hot cathode) in a single case
- Highly accurate
- Excellent reproducibility
- Automatic cathode protection
- A single flange from atmosphere to UHV
- Corrosion-resistant
- Maximum pressure refers to inert gases and temperatures of less than 55 °C

Dimensions



| Technical Data | IMR 265, High Pressure Hot Cathode, DN 40 CF-F |
|--|---|
| Accuracy: % of measurement | 10^{-5} - 1 hPa: ± 15 % |
| Bakeout temperature | 150 °C 302 °F 423 K |
| Electron collector | Stainless steel |
| Filament | Iridium yttriated |
| Filament holder | Molybdenum, Platinum |
| Flange | Stainless steel |
| Flange (in) | DN 40 CF-F |
| Insulator | Glass |
| Ion collector | Stainless steel |
| Measurement range max. | 1,000 hPa 750 Torr 1,000 mbar |
| Measurement range min. | $2 \cdot 10^{-6}$ hPa $1.5 \cdot 10^{-6}$ Torr $2 \cdot 10^{-6}$ mbar |
| Output signal: Minimum load | 10 k |
| Output signal: Pressure range Ioni | 1.5 - 7.5 V |
| Output signal: Pressure range Pirani | 8.5 - 9.75 V |
| Output signal: Sensor error | 0.5 V |
| Pirani measurement element | Copper, Tungsten |
| Pressure max. | 5,000 hPa 3,750 Torr 5,000 mbar |
| Repeatability: 10^{-1} - 10^2 hPa | 30 % reading |
| Repeatability: 10^{-5} - 10^{-1} hPa | 2 % reading |
| Sensor cable length | 100 m |
| Supply: Power consumption max. | 16 W |
| Supply: Voltage | 20-30 V DC |
| Temperature: Operating | 0-50 °C 32-122 °F 273-323 K |
| Temperature: Storage | -20-70 °C -4-158 °F 253-343 K |
| Volume | 20 cm ³ |
| Weight | 550 g |

Order number

Hot Cathode Gauges IMR 265, ($2 \cdot 10^{-6}$ - 1000 hPa)

PT R26 503

Accessories

ActiveLine sensor cables

Sensor cable, 3 m

PT 448 250 -T