



Hot Cathode Gauges IMR 265, ($2 \cdot 10^{-6}$ - 1000 hPa)



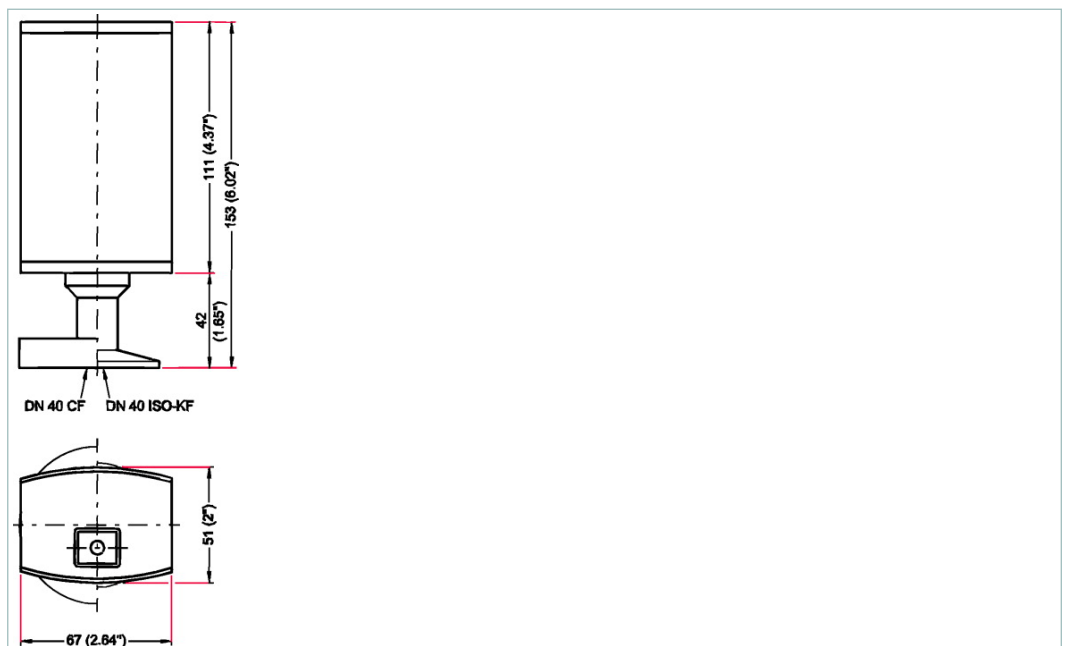
IMR 265, High Pressure Hot Cathode, DN 40 ISO-KF



Similar Image

- Flange size: DN 40 ISO-KF
- Measurement range from $2 \cdot 10^{-6}$ to 1000 hPa
- Two gauge heads (Pirani and hot cathode) in a single case
- Highly accurate
- Excellent reproducibility
- Automatic cathode protection
- A single flange from atmosphere to UHV
- Corrosion-resistant
- Maximum pressure refers to inert gases and temperatures of less than 55 °C

Dimensions



Technical Data	IMR 265, High Pressure Hot Cathode, DN 40 ISO-KF
Accuracy: % of measurement	10^{-5} - 1 hPa: ± 15 %
Bakeout temperature	150 °C 302 °F 423 K
Electron collector	Stainless steel
Filament	Iridium yttriated
Filament holder	Molybdenum, Platinum
Flange	Stainless steel
Flange (in)	DN 40 ISO-KF
Insulator	Glass
Ion collector	Stainless steel
Measurement range max.	1,000 hPa 750 Torr 1,000 mbar
Measurement range min.	$2 \cdot 10^{-6}$ hPa $1.5 \cdot 10^{-6}$ Torr $2 \cdot 10^{-6}$ mbar
Output signal: Minimum load	10 k
Output signal: Pressure range Ioni	1.5 - 7.5 V
Output signal: Pressure range Pirani	8.5 - 9.75 V
Output signal: Sensor error	0.5 V
Pirani measurement element	Copper, Tungsten
Pressure max.	5,000 hPa 3,750 Torr 5,000 mbar
Repeatability: 10^{-1} - 10^2 hPa	30 % reading
Repeatability: 10^{-5} - 10^{-1} hPa	2 % reading
Sensor cable length	100 m
Supply: Power consumption max.	16 W
Supply: Voltage	20-30 V DC
Temperature: Operating	0-50 °C 32-122 °F 273-323 K
Temperature: Storage	-20-70 °C -4-158 °F 253-343 K
Volume	20 cm ³
Weight	315 g

Order number

Hot Cathode Gauges IMR 265, ($2 \cdot 10^{-6}$ - 1000 hPa)

PT R26 501

Accessories

ActiveLine sensor cables

Sensor cable, 3 m

PT 448 250 -T